

Prescription and Medical Pharmacy Drug Utilization and Cost Trends, 2010-2015

Pension and Health Benefits Committee
September 20, 2016

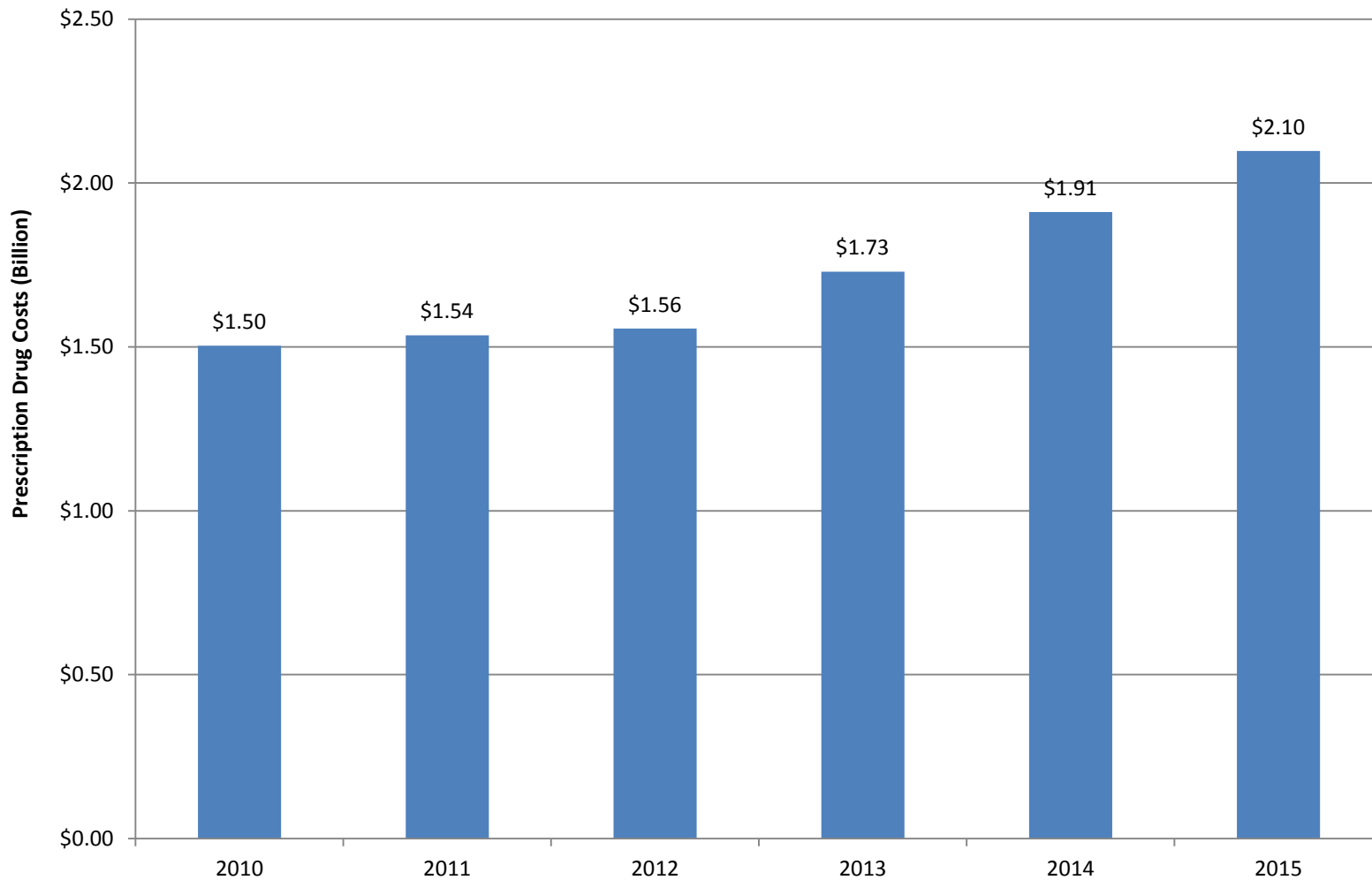
Melissa Mantong, PharmD
CalPERS Pharmacist

- Trends in prescriptions and costs
- Generic dispensing rate by plans
- 2015 costs by prescription drug type
- Specialty prescription drug utilization and cost
- Medical pharmacy (office administered drugs)

Data Specifications and Caveats

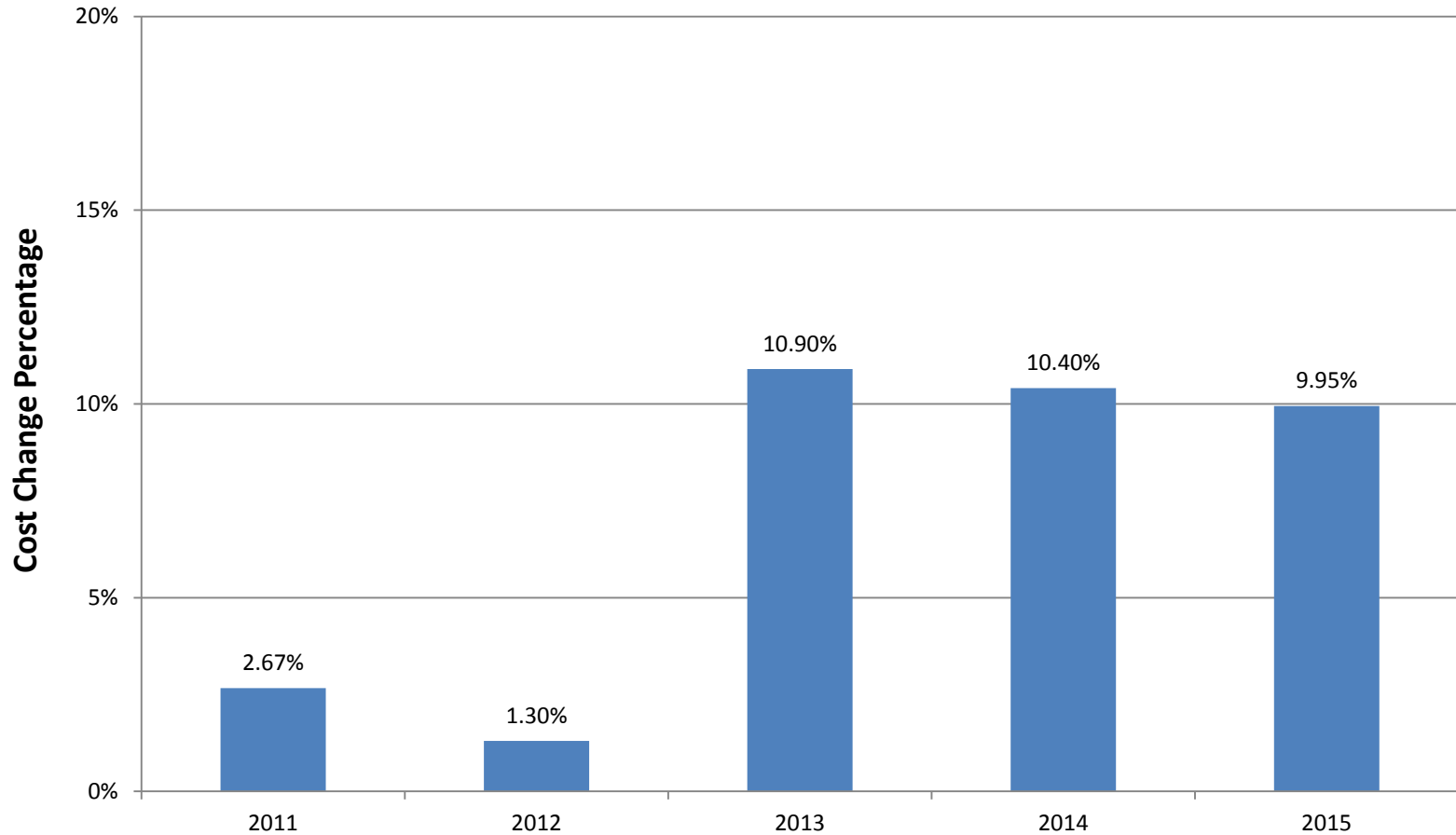
- Data source is CalPERS Health Care Decision Support System (HCDSS).
- Data includes:
 - Members in all Basic and Medicare plans except as otherwise indicated
 - Employer Group Waiver Plans (EGWP) data from inception in 2013

Prescription Drug Costs

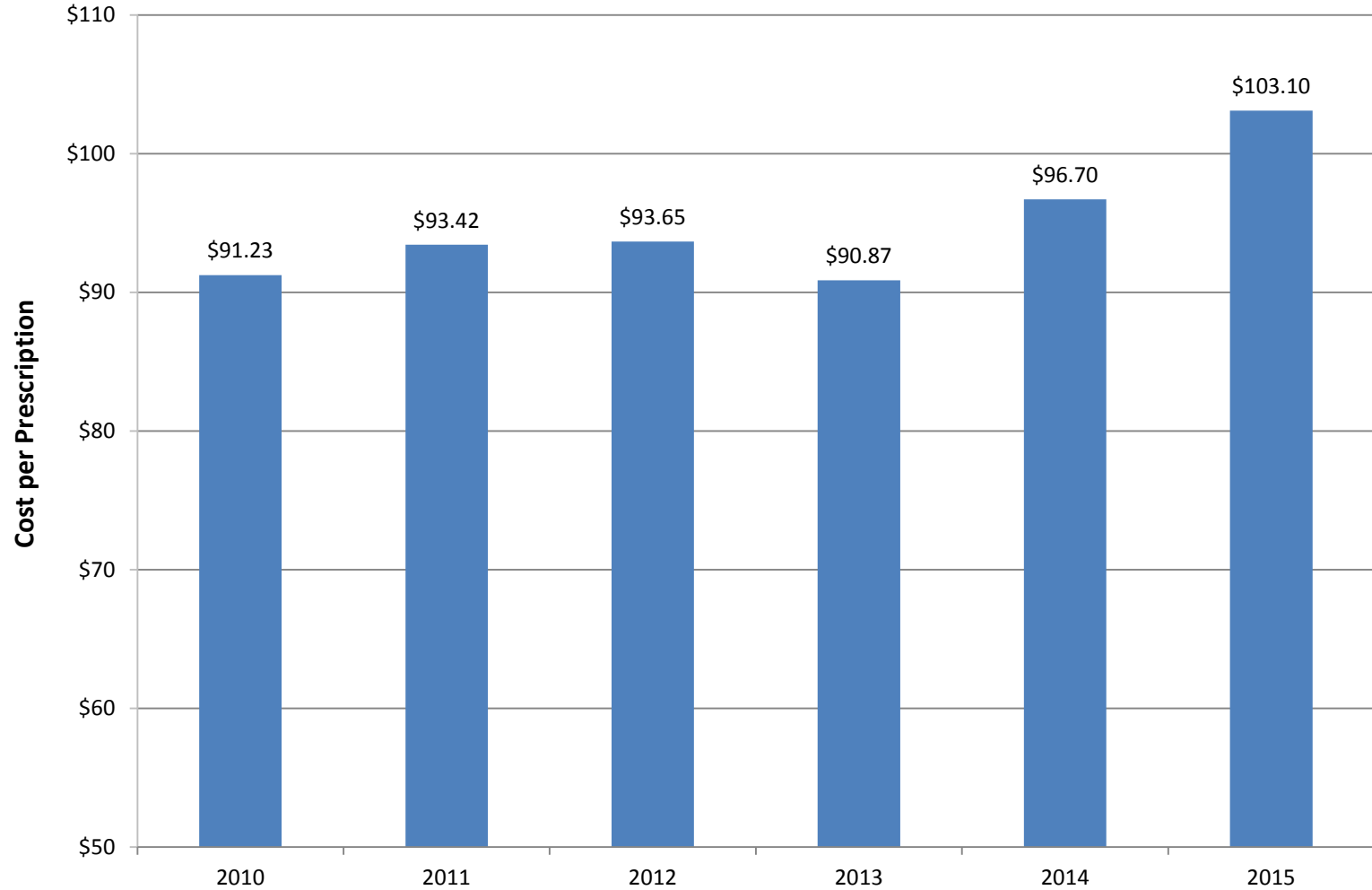




Prescription Drug Costs – Annual Percentage Changes

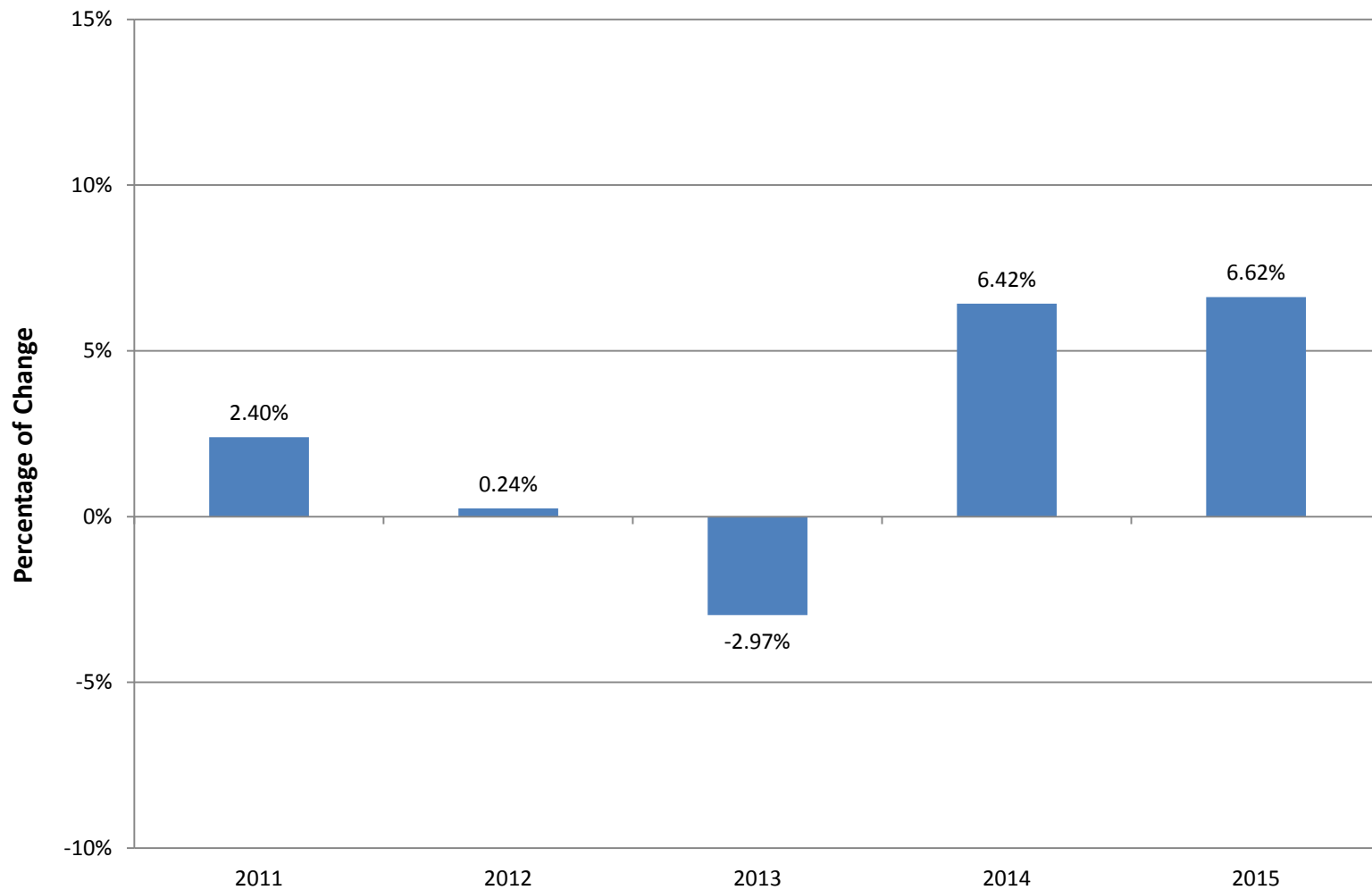


Cost Per Prescription





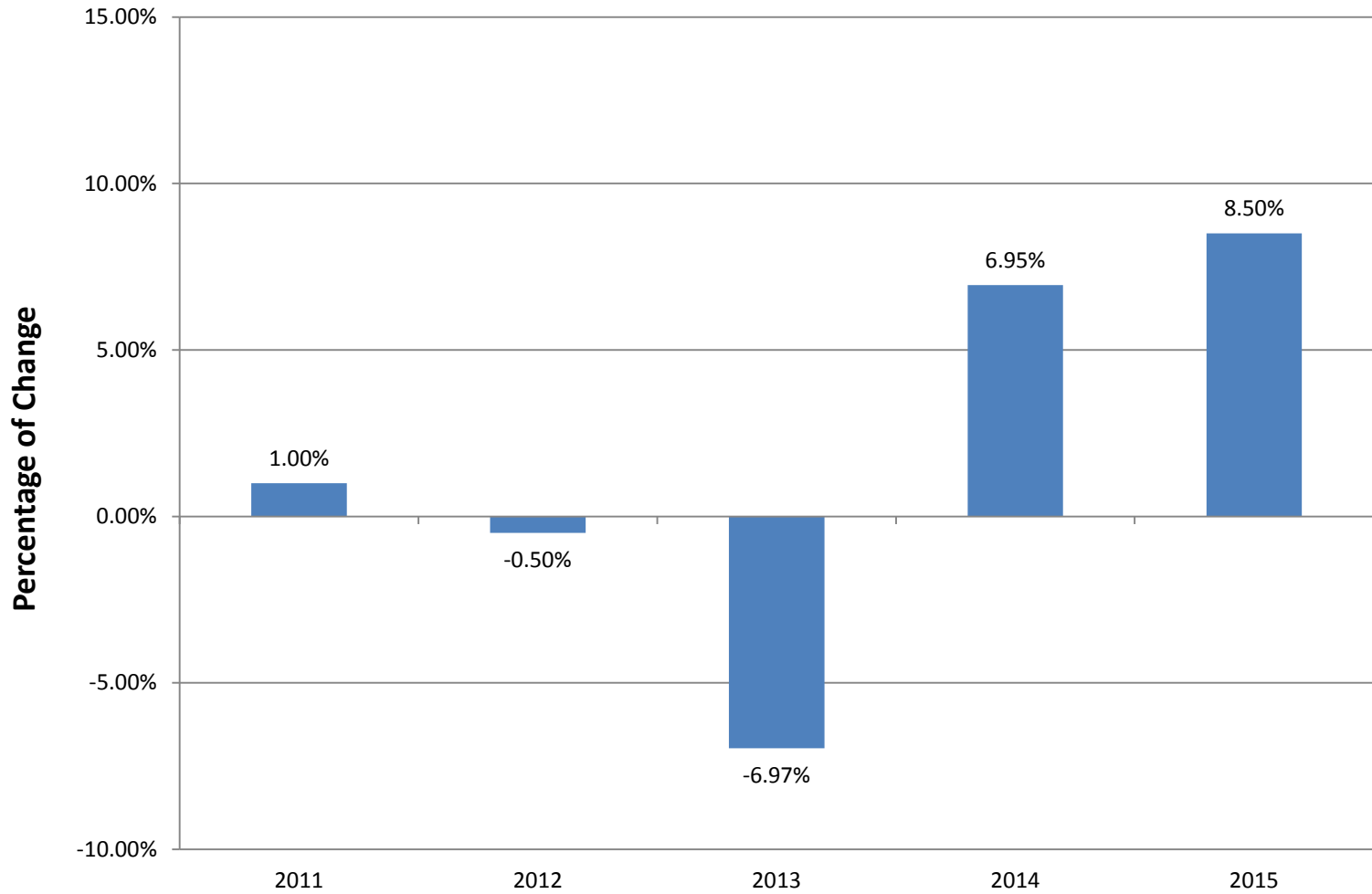
Cost per Prescription - Annual Percentage Changes



Cost Per Day Supply



Cost per Day Supply - Annual Percentage Changes



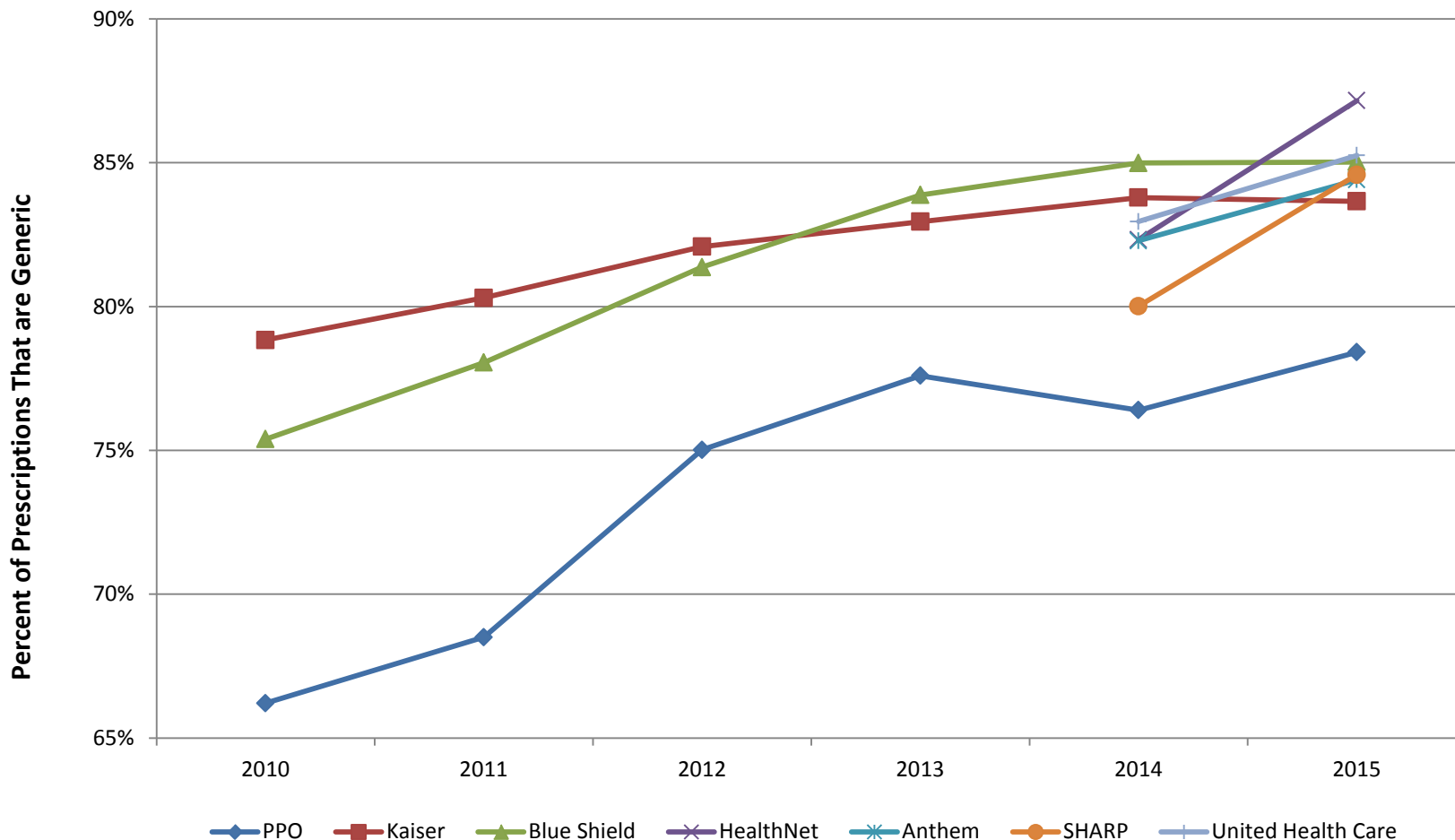


2015 Costs by Prescription Drug Type

	Generic	Non-Specialty Brand		Specialty	Total
		Multi-Source	Single Source		
Number of Prescriptions	14,705,214	462,625	1,846,849	158,006	17,172,694
Allowed Amount (millions)	\$544	\$137	\$732	\$587	\$2,000
Member Cost Share (millions)	\$92	\$13	\$60	\$6	\$171
Allowed Amount per Prescription	\$36.98	\$296.11	\$396.56	\$3,715.53	\$116.48
Member Cost Share per Prescription	\$6.28	\$27.97	\$32.37	\$37.15	\$9.95
Member Cost Share %	17.0%	9.4%	8.2%	1.0%	8.5%

Totals are row total only and do not include over the counter or unspecified drugs.

Generic Dispensing Trends by Plan



PPO includes: PERSCare, PERS Choice, and PERS Select.
 Association plans not included.
 Standard definition of generic by Milliman was used.



2015 Top Ten Non-Specialty Drugs

Drug Name	Primary Indication	Allowed Amount (millions)	Percent of Total Prescription Allowed Amount	Percent of Total Non-Specialty Drugs Allowed Amount
LANTUS	Diabetes	\$36.82	1.81%	2.54%
ADVAIR DISKUS	Asthma	\$30.72	1.51%	2.12%
CRESTOR	High Cholesterol	\$24.30	1.19%	1.68%
JANUVIA	Diabetes	\$22.87	1.12%	1.58%
SPIRIVA HANDIHALER	COPD	\$17.20	0.84%	1.19%
ATORVASTATIN CALCIUM	High Cholesterol	\$17.17	0.84%	1.18%
ABILIFY	Bipolar Disorder	\$15.68	0.77%	1.08%
LYRICA	Fibromyalgia	\$15.20	0.75%	1.05%
ARIPIPRAZOLE	Bipolar Disorder	\$14.30	0.70%	0.99%
OXYCONTIN	Pain	\$14.25	0.70%	0.98%
Total Top Ten Non-Specialty drugs		\$208.53	10.23%	14.37%

	2012	2013	2014	2015
Number of Specialty Drug Prescriptions	81,463	96,563	139,910	158,006
Specialty Drug Prescriptions as a % of Total Prescriptions	0.49%	0.56%	0.80%	0.89%
Specialty Drug Allowed Amount (millions)	\$270	\$323	\$450	\$587
Specialty Drug Allowed Amount as % of Total	17.37%	19.75%	24.14%	28.81%
Specialty Drug Member Cost Share Amount (millions)	\$2.24	\$4.46	\$5.12	\$5.87
Specialty Drug Member Cost Share %	0.8%	1.4%	1.1%	1.0%

Based on 2012, 2013, 2014, and 2015 CVS/caremark Specialty Drugs lists.

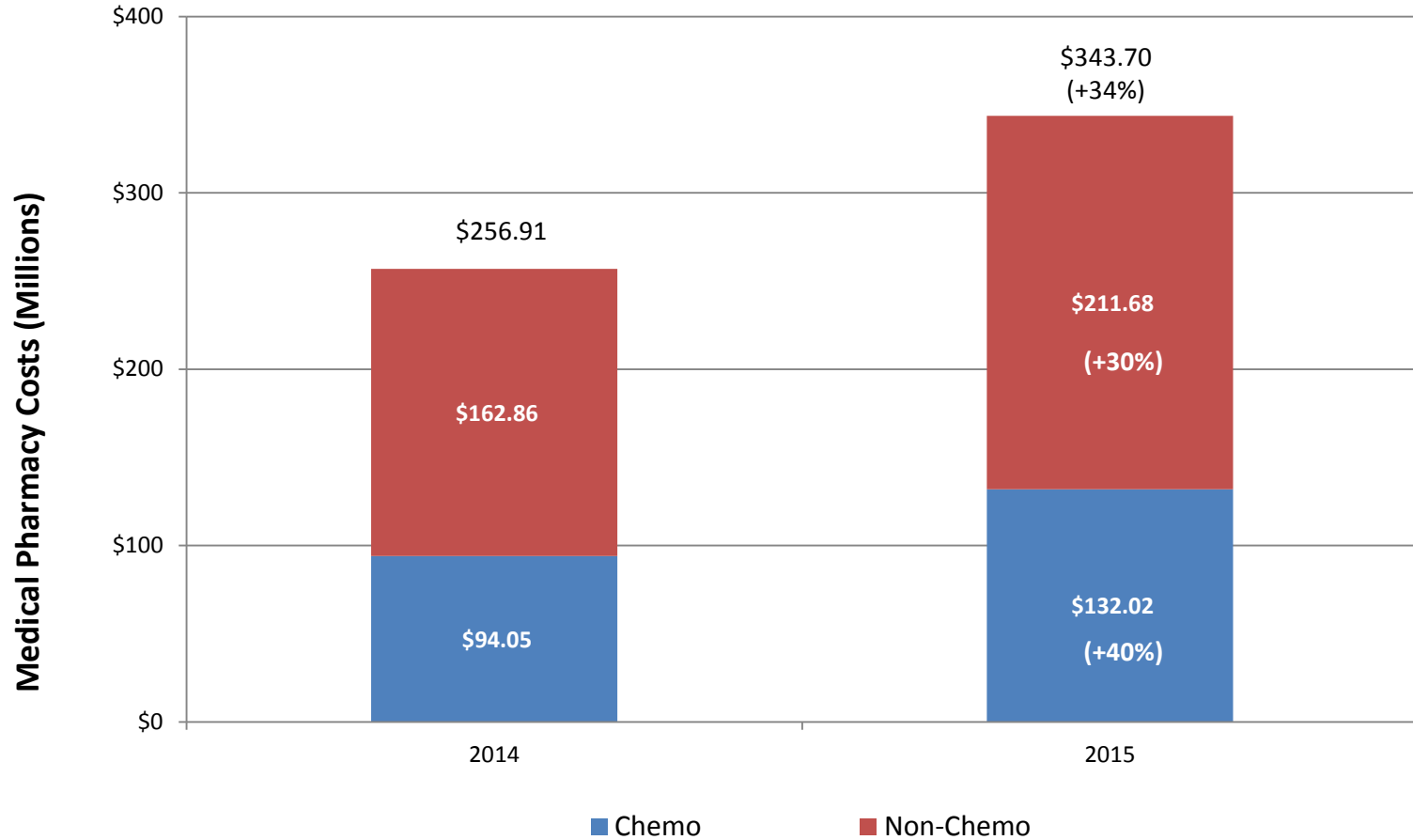


2015 Top Ten Specialty Drugs

Drug Name	Primary Indication	Allowed Amount (millions)	Percent of Total Prescription Allowed Amount	Percent of Total Specialty Drugs Allowed Amount
HARVONI	Chronic Hepatitis C	\$94.54	4.64%	16.10%
HUMIRA	Rheumatoid Arthritis	\$62.36	3.06%	10.62%
ENBREL	Rheumatoid Arthritis	\$55.63	2.73%	9.48%
REVLIMID	Cancer	\$24.44	1.20%	4.16%
COPAXONE	Multiple Sclerosis	\$22.36	1.10%	3.81%
GLEEVEC	Cancer	\$21.44	1.05%	3.65%
SOVALDI	Chronic Hepatitis C	\$16.61	0.82%	2.83%
TECFIDERA	Multiple Sclerosis	\$15.15	0.74%	2.58%
XTANDI	Cancer	\$8.22	0.40%	1.40%
ZYTIGA	Cancer	\$8.21	0.40%	1.40%
Total Top Ten Specialty Drugs		\$328.96	16.14%	56.03%

Based on 2015 CVS/caremark Specialty Drugs list.

Medical Pharmacy (Office Administered Drugs)



Based on Healthcare Common Procedure Coding System (HCPCS) J Codes.



Medical Pharmacy

Allowed Amounts for Top 10 Drugs

Drug	Primary Indication	Allowed Amount (millions)
Infliximab	Rheumatoid Arthritis	\$27.14
Rituximab	Cancer	\$24.95
Trastuzumab	Cancer	\$17.72
Bevacizumab	Cancer	\$16.11
Pegfilgrastim	Neutropenia	\$15.97
Aflibercept	Macular Edema	\$12.17
Denosumab	Cancer	\$9.10
Ranibizumab	Macular Edema	\$7.81
Bortezomib	Cancer	\$6.62
Pemetrexed	Cancer	\$6.19
Total Top Ten Medical Pharmacy Drugs		\$143.76
Total Medical Pharmacy Drugs		\$343.70