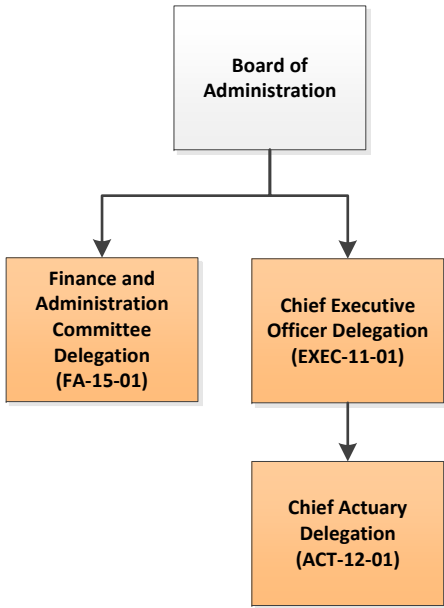
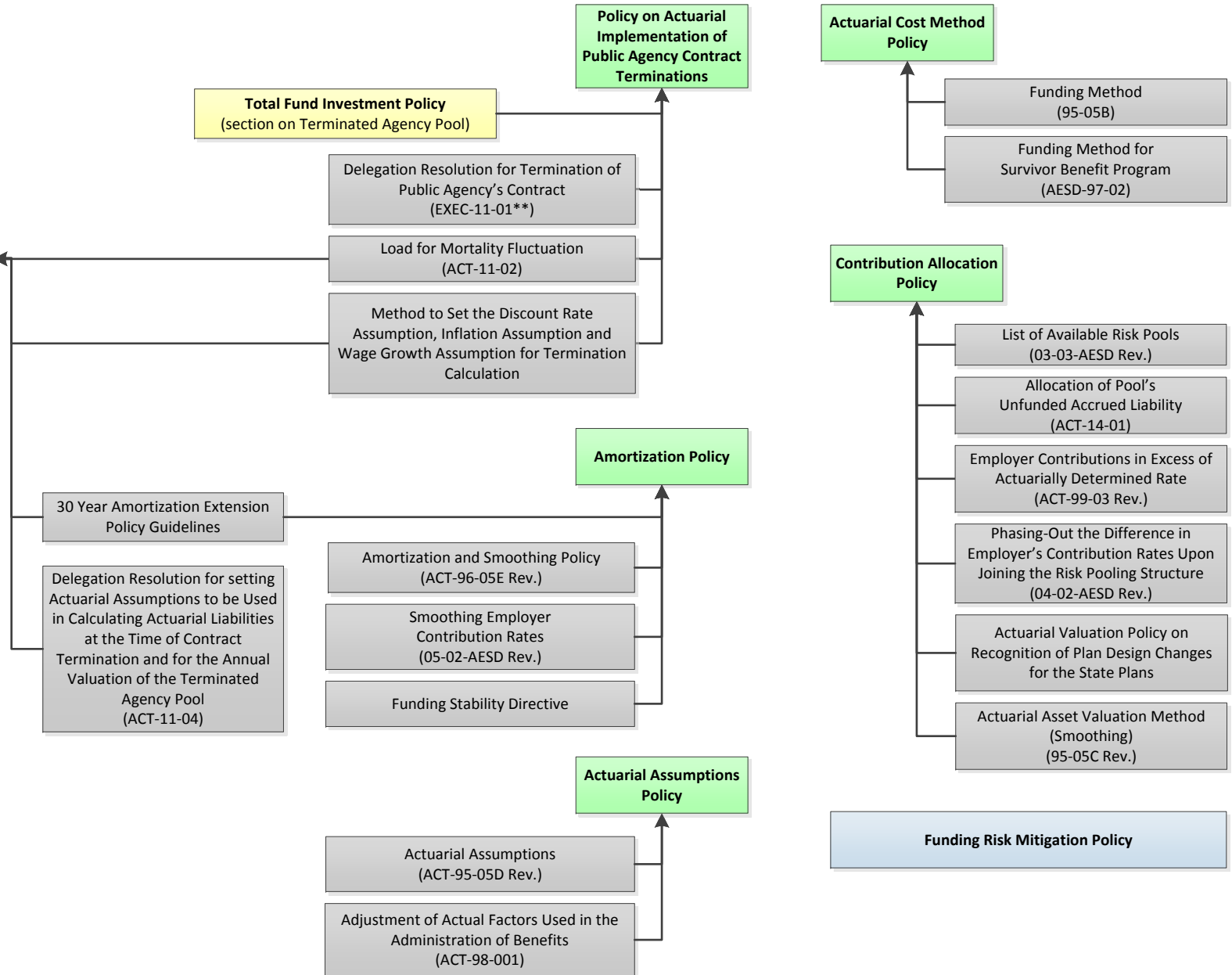


## Actuarial Delegations & Policies Path Forward

### Delegations



### Policies\*



**Key**

- Proposed New Policy
- Delegation
- Retire
- INVO Policy
- Jointly-Owned Policy

\* All actuarial policies, assumptions and methodologies must be approved by the Board.  
 \*\* Delegation number conflicts with CEO delegation number.